

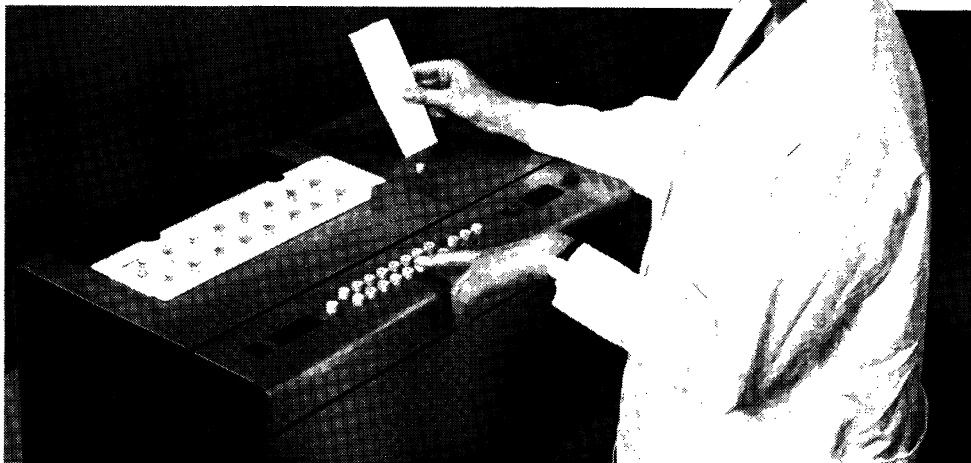
A new concept, high through-put counter for ^{125}I

NE1600

The Nuclear Enterprises NE 1600 introduces a completely new concept in ^{125}I sample counting achieving a throughout-put almost twenty times greater than orthodox instruments. A batch of 96 typical samples takes only 6 minutes counting time and sufficient data to derive a standard curve is available within two minutes. Queuing becomes a thing of the past!

Simplicity of operation is just one major feature of the NE 1600 with only two controls being used in routine assays. Exceptional reproducibility and reliability, excellent counting performance, fast loading and versatile recording facilities are a few of the others!

Call us for full details of this unrivalled new counter.

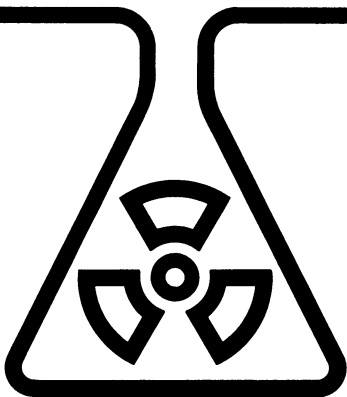


**NUCLEAR
ENTERPRISES
LIMITED**



SIGHTHILL, EDINBURGH EH11 4EY, SCOTLAND
Telephone: 031-443 4060
Cables: Nuclear, Edinburgh Telex: 72333

Associate Companies
Nuclear Enterprises GmbH, Schwantalerstrasse 74,
8 Munchen 2, Germany Tel 53-62 23. Telex 529938
Nuclear Enterprises Inc., 935 Terminal Way, San Carlos,
California 94070. Tel 415 693 1455 Telex 348371



NEW

¹²⁵I

labelled nucleotides

5-^[125]Iodocytidine 5'-triphosphate,
sodium salt IM.101

5-^[125]Iodo-2'-deoxycytidine
5'-triphosphate, sodium salt IM.103

- * prepared every 4 weeks
- * specific activity > 1400Ci/mmol
- * extensively tested in independent laboratories

Please enquire for further details.



The Radiochemical Centre Amersham

The Radiochemical Centre Limited, Amersham, England.
Tel: Little Chalfont (024 04) 4444.

In the Americas: Amersham/Searle Corp, Illinois 60005.
Tel: 312-593-6300.

In W. Germany: Amersham Buchler GmbH & Co, KG,
Braunschweig, Tel: 05307-4693-97.

1230/20

ADVERTISING RATES

Cover and Special Positions	£90
Full Page	£70
Half Page	£40
Quarter Page	£25

Agency Commission	10%
Publisher's Discount	10%

All communications regarding advertising matters should be addressed to:

Advertisement Section,
Biochemical Society,
7 Warwick Court,
London WC1R 5DP

Telephone: 01-242 1076
(4 lines)

THE BIOCHEMICAL JOURNAL

CLINICAL SCIENCE AND MOLECULAR MEDICINE

Formerly *Clinical Science*

EDITORIAL BOARD

For the Biochemical Society

D. J. GALTON, *Deputy Chairman*

H. S. BACHELARD, B. H. BILLING, R. FRASER, D. GOMPERTZ,
D. A. HEMS, W. P. T. JAMES, D. E. M. LAWSON, B. LEWIS,
B. E. C. NORDIN, J. L. REID, M. SANDLER, P. G. WALKER

For the Medical Research Society

D. C. FLENLEY, *Chairman*

A. J. BELLINGHAM, I. R. CAMERON, F. J. CONWAY, P. T. FLUTE, P. J. HILTON,
D. B. MORGAN, M. I. M. NOBLE, P. RICHARDS, G. E. SLADEN,
J. D. SWALES, N. VEALL, M. M. WEBB-PEPLOE

VOL. 52, No. 3

MARCH 1977

CONTENTS

Editorial Review: The molecular basis for abnormal gene action: recent lessons from the thalassaemia model. By D. J. WEATHERALL

Enzyme activities in human liver biopsies: assay methods and activities of some lysosomal and membrane-bound enzymes in control tissue and serum. By CAROL A. SEYMOUR and T. J. PETERS

Lysosomal changes in liver tissue from patients with the Dubin-Johnson-Sprinz syndrome. By CAROL A. SEYMOUR, G. NEALE and T. J. PETERS

The relative transfer rates for sodium and xenon from gut lumen to plasma in man. By A. H. G. LOVE, L. C. CHEN, J. REEVE and N. VEALL

Concentrations of prostaglandin A-, E- and F-like substances in gastric mucosa of normal subjects and of patients with various gastric diseases. By W. SCHLEGEL, K. WENK, H. C. DOLLINGER and S. RAPTIS

Amino acid concentrations in portal venous plasma during absorption from the small intestine of the guinea pig of an amino acid mixture simulating casein and a partial enzymatic hydrolysate of casein. By M. H. SLEISENGER, D. PELLING, D. BURSTON and D. M. MATTHEWS

Interaction of mental factors with hypercapnic ventilatory drive in man. By J. R. A. RIGG, E. M. INMAN, N. A. SAUNDERS, S. R. LEEDER and N. L. JONES

Oxygen affinity *in vivo* and *in vitro* in chronic ventilatory failure. By P. M. TWEEDDALE, R. J. E. LEGGETT and D. C. FLENLEY

Human skeletal muscle function: description of tests and normal values. By R. H. T. EDWARDS, A. YOUNG, G. P. HOSKING and D. A. JONES

A study of the contractility, biochemistry and morphology of an isolated preparation of human skeletal muscle. By R. F. W. MOULDS, A. YOUNG, D. A. JONES and R. H. T. EDWARDS

Blood pressure response of nephrectomized hypertensive rats to converting enzyme inhibition: evidence for persistent vascular renin activity. By H. THURSTON and J. D. SWALES

The role of the false neurotransmitter octopamine in the hypotension of fulminant hepatic failure. By P. N. TREWBY, R. A. CHASE, M. DAVIS and R. WILLIAMS

Plasma glucose, non-esterified fatty acids and amino acids in Huntington's chorea. By O. T. PHILLIPSON and E. D. BIRD

The urinary excretion of catecholamines and their derivatives in primary hypertension in man. By R. F. BING, J. HARLOW, A. J. SMITH and M. M. TOWNSHEND

SHORT COMMUNICATIONS

Leucocyte intracellular pH in patients with the metabolic acidosis of renal failure. By G. E. LEVIN and D. N. BARON

Plasma calcitonin in Paget's disease of bone. By J. A. KANIS, G. HEYNEEN and R. J. WALTON

The subscription price is £35.00 (U.K.), £35.00 (Overseas) and \$120.00 (North America) per annum, post free.

BLACKWELL SCIENTIFIC PUBLICATIONS LTD
OSNEY MEAD, OXFORD OX2 0EL, ENGLAND

Biological Macromolecules and Polyelectrolytes in Solution

Henryk Eisenberg

This account of some aspects of the solution properties of biological and polyelectrolyte macromolecules emphasizes universality rather than specialization, and it will appeal therefore to research workers in a wide scientific field, including biophysics, polymer chemistry, and the life sciences. The subjects treated are multi-component theory, partial volumes, density and refractive-index increments, 'preferential' interaction parameters, sedimentation equilibrium, macromolecular association and non-ideality, sedimentation velocity and diffusion, viscosity, charge effects, and basic polyelectrolyte theory. £16

Monographs on Physical Biochemistry

Biochemical Analysis in Crop Science

Simon R. Draper

This is an introductory textbook for undergraduates and research workers wishing to use biochemical techniques in the study of crop plants. The first part, which deals with the technical procedures associated with the sampling and analysis of temperate and tropical crops and their products, will enable biologists to design their own experiments. The second part, dealing with the major constituents of plant tissues, discusses the physiological and metabolic significance of individual compounds, and also includes an outline of the appropriate analytical techniques required for their examination. £5.50 paper covers £2.75

Oxford University Press

Biochemica

MERCK



Proteinase K

a new, stable protease from *Tritirachium album*:

W. Ebeling, N. Hennrich, M. Klockow, H. Metz, H.-D. Orth and H. Lang, *Eur. J. Biochem.* 47, 91 (1974)

Use in molecular biology:

Isolation of native mRNA from polysomes

Refs.: U. Wieggers and H. Hilz, *Biochem. Biophys. Res. Comm.* 44, 513 (1971)

U. Wieggers and H. Hilz, *FEBS Letters* 23, 77 (1972)

M. Schleicher and E. K. F. Bautz, *FEBS Letters* 28, 139 (1972)

U. Wieggers, G. Kramer and H. Hilz, *Biochem. Biophys. Res. Comm.* 50, 1039 (1973)

B. Mach, C. Faust and P. Vassalli, *Proc. Nat. Acad. Sci.* 70, 451 (1973)

C. H. Faust, Jr., H. Diggelmann and B. Mach, *Biochemistry* 12, 926 (1973)

Isolation of high molecular DNA

Refs.: M. Gross-Bellard, P. Oudet and P. Chambon, *Eur. J. Biochem.* 36, 32 (1972)

Use in serology:

Detection of incomplete antibodies (Rh-antibodies)

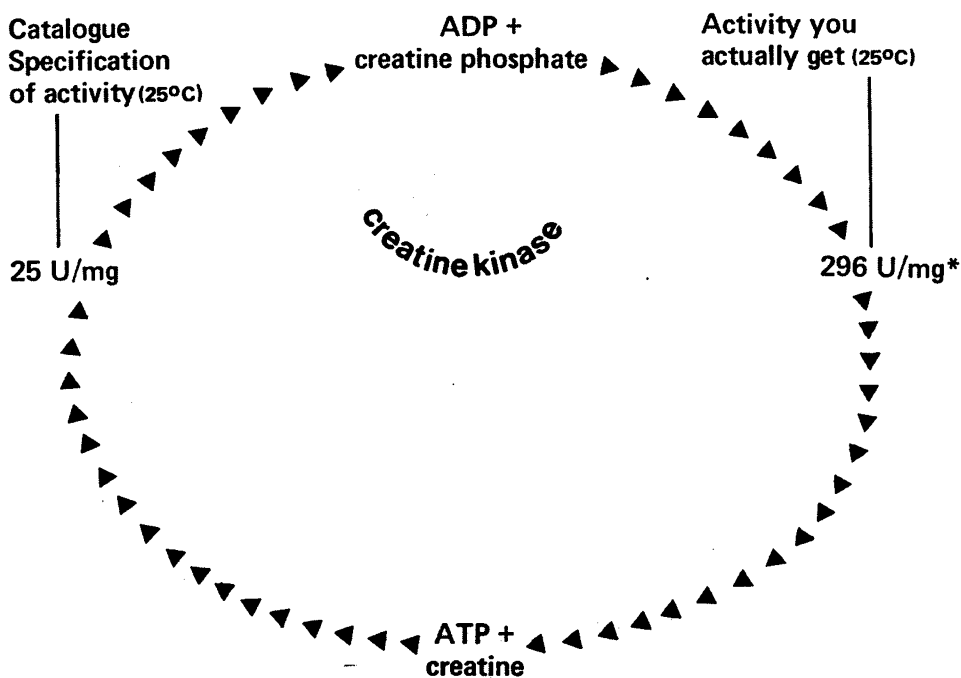
Refs.: D. Roelcke and G. Uhlenbruck, *Z. med. Mikrobiol. u. Immunol.* 155, 156 (1969)

BUYING ENZYMES? —the natural choice



The 'Enzyme People' are your natural choice
for guaranteed top-quality stable enzymes of high activity.

The following example of Creatine Kinase Cat. No. 126969 shows how
much more you get by choosing Boehringer Mannheim Enzymes.



*from results of recent quality control analyses

*Remember . . . when your buying enzymes . . .Boehringer Mannheim
for quality and value.*



For further details please contact:
The Boehringer Corporation (London) Ltd.,
Bell Lane, Lewes, East Sussex BN7 1LG.
Telephone: Lewes (07916) 71611

If in the Republic of Ireland please contact our Dublin Office at:
Valentine House, Temple Road, Blackrock, Co. Dublin. Tel: Dublin 882613/882726

